

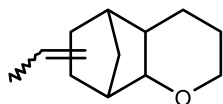
Green

Fruity

Floral

RHUBOFLOR

978891



5,8-Methano-2H-1-benzopyran, 6-ethylideneoctahydro-

## OLFACTIVE NOTE

Powerful, green, fruity berry, floral and herbal note. The undertone recalls orris, carrot seed and hyacinth.

## REFERENCES

CAS number: **0093939-86-7**

FEMA number: -

REACH number: **01-2120042867-48**Stabilizer: **0.05% of BHT**Solvent: **None added**Firmenich code: **978891**

## PERFUMERY USAGE

Surprising effects can be achieved at very low dosages. It blends well with rose, orris and orange flower notes and with the green herbal and lavender themes.

## Tenacity

Lasts 6 hours  
on a smelling strip.



1 month

3 weeks

2 weeks

1 week

4 days

3 days

2 days

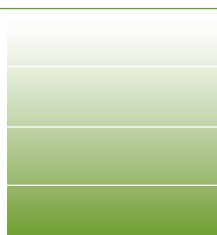
1 day

6 hours

3 hours

2 hours

1 hour



## PHYSICO-CHEMICAL PROPERTIES

appearance	Colourless to pale yellow liquid
flashpoint	>100°C
vapour pressure	5.23 Pa at 20°C
purity	min 95%
log p (measured)	4.47
molecular weight	179

## STABILITY & PERFORMANCE

RECOMMENDED APPLICATIONS	STABILITY	TYPICAL % USE	SUBSTANTIVITY & REMARKS	
<b>fine fragrances</b>	■■■■■	traces - 0.1%	<b>Top and heart note</b>	
<b>shampoo</b>	■■■■■	traces - 0.2%	wet: ■■■■	dry: ■■■■
<b>shower gel</b>	■■■■■	traces - 0.2%	bloom: ■■■■	
<b>soap</b>	■■■■■	traces - 0.2%	foam: ■■■■	dry hand: ■■■■
<b>detergent</b>	■■■■■	traces - 0.2%	wet: ■■■■	dry: ■■■■
<b>softener</b>	■■■■■	traces - 1%	wet: ■■■■	dry: ■■■■
<b>APC</b>	■■■■■	traces - 0.5%	-	
<b>candle</b>	■■■■■	traces - 1%	cold wax: ■■■■	burning: ■■■■